

# Heptagon 'IDEA'

## Unlocking Million \$

**Pepledesk significantly increases daily efficiency and reduces operational delays.**

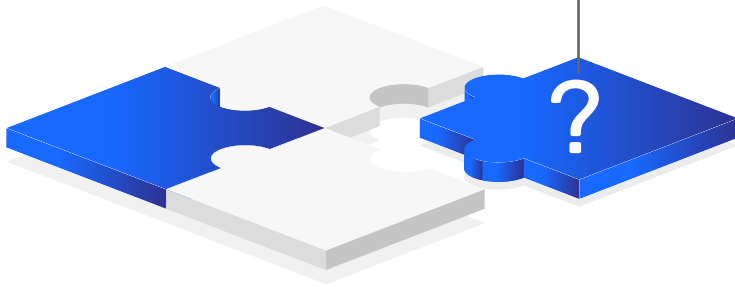
Pepledesk, a modern cloud-based HRMS, is a people management solution for enterprises that empowers a top electrical manufacturer to adopt a modern approach

### The Client

Our client is a leading Indian electricals and home appliances manufacturer. Headquartered in Kochi in Kerala, the company has forayed into domestic, industrial, and agricultural electronic goods and appliances since its inception. It has over 30,000 retailers, 500 distributors, and several branches across the country. It has been listed with the NSE and BSE since 2008.



**heptagon**



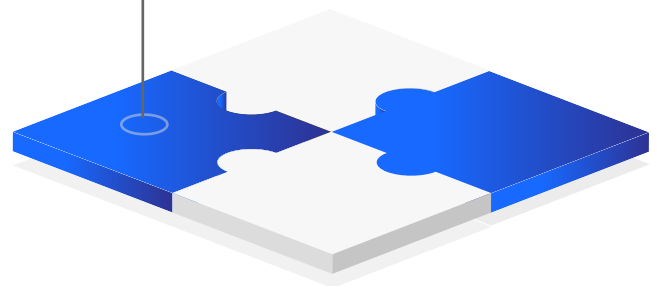
## The Challenge

Our client has employees stationed across various facilities. The challenge faced by the company was two-tiered. Firstly, HR operations suffered due to the inaccessibility of employee work and personal documents. Secondly, day-to-day operations slackened due to the delays in approvals required by employees from their managers.

The required permissions included but were not limited to booking a meal at the canteen, leave requests, bonafide letter requests, and more. Both challenges arose due to the inflexible and decentralized nature of the native HRMS, a web application, which could only be accessed through the intranet.

## Our Solution

Heptagon Technologies proposed PeopleDesk, a modern mobile and web HRMS available on Android and iOS. Our application, hosted on the cloud, allowed for flexibility and eliminated location dependencies. The employees of the client company could raise requests and receive immediate approvals from their managers. Further, all employee documents could be stored and accessed in a completely safe manner from PeopleDesk within a few clicks.

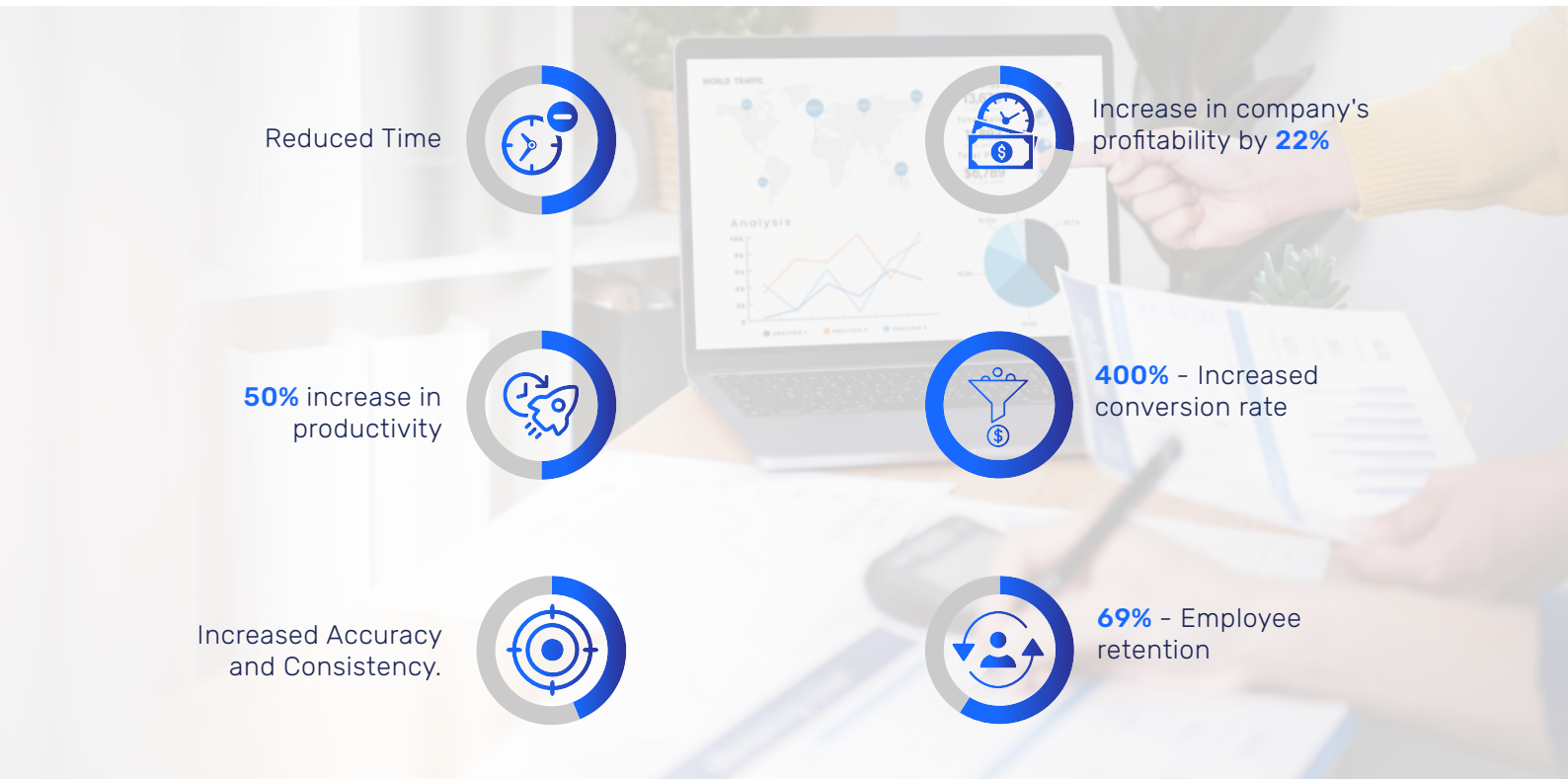


heptagon

## Business Outcomes

Pepledesk addressed the two main challenges faced by the client company and also reduced other HR operations-related inefficiencies. With Pepledesk:

- The employees could easily access their pay slips
- Uploading and accessing employee documents was now convenient
- All employees could request approvals due to the comprehensive UX it provides
- Delays in receiving approvals was reduced significantly, increasing the execution speed of daily operations



## The Future

The future of work is digital and with digitalization comes a paperless workplace. Onboarding is an essential part of an employee's transition to a new job. Going 'paperless' for employee onboarding should not be one's mission. Companies should future-proof their onboarding by looking beyond the paperless and towards employee experience.



**heptagon**

**Heptagon Technologies Pvt Ltd**



Newyork, Dubai & Bangalore



[www.heptagondigital.com](http://www.heptagondigital.com)